

SWINDON CLIMATE ACTION NETWORK

June 15, 2007
Volume 2, Issue 9

www.swindonclimate.org.uk

send contributions to e-digest@swindonclimate.org.uk

CLIMATE CAMP 2007

Last year 600 people demonstrated at DRAX power station, this year it's the turn of Heathrow Airport.

A week long climate camp will run from August 14th-21st highlighting the urgency of action against climate change and protesting at the expansion of Heathrow Airport. Join them for workshops, discussions and direct action.

People are also needed to help out with the running of the camp, especially acting as legal observers.

For more info go to www.climatecamp.org.uk

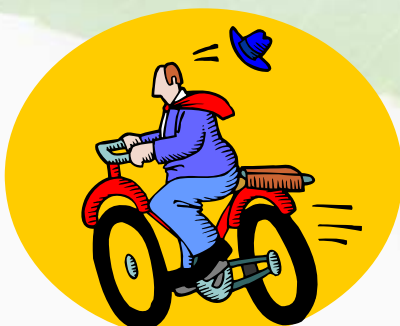
NATIONAL SELF-BUILD AND RENOVATION CENTRE – IN SWINDON

SCAN were invited last month to visit the Centre, sited in West Swindon (next to the Hilton).

It is very impressive. The walk round educational exhibits show all aspects of building options from soil pipes to skylights and solar panels. Two full-scale model houses with comprehensive audio-tours show the ins and outs of renovation and new self-build. Dave Hilton, building engineer advisor, is on hand to give detailed guidance and he is keen to promote effective energy conservation.

You need at least two hours here, but there is a café to rest up and refresh. There is even a bookshop! The downside is it costs you £8 to get in, which includes their chunky guidebook.

It is a national centre and it is in Swindon, which is great! To get there on the bus take no. 54 (I think-check this!) to Blagrove Roundabout and then a 10 minute walk.



TRANSPORT ACTION

Over a quarter of Europe's carbon emissions come from transport, the majority of these from cars.

Car makers have failed to deliver on their own targets on emissions and now the European Commission are proposing legally-binding targets. The car industry is fighting hard to avoid these mandatory targets but these targets must be tough enough if they are going to have an effect on climate change.

The Commission are asking for your opinion on what their policy should be. Tell them that you want tough mandatory and long-term targets that will significantly reduce the impact of the car on our climate.


Take action before 30th June at http://www.foe.co.uk/campaigns/transport/press_for_change/cars_consultation/index.html!

CYCLING LESSONS

- Do you feel a bit nervous cycling in town?
- Do you wobble when you try to signal?
- Or did you never learn to cycle?
- Gain more confidence on your bike – any age.
- Contact Gladys Barr 01793 708775 email gladysbarr@swindon-pct.nhs.uk

Upcoming Events

- **Wednesday June 20th: SCAN meeting**
Friends Meeting House, Eastcott Hill 7.30pm. All welcome. Agenda to include stall design, SCAN logo and transport campaign.
- **Saturday June 16th 9-12 am Wanborough Farmers Market, Village Hall.** Lots of local producers, many just a few fields away.
- **June 30th/July 1st Old Town Festival** SCAN's new stall in action, measuring carbon footprints. Come and help or be measured!
- **July 7th Live Earth** Madonna plays for the planet Keep up by going to <http://liveearth.msn.com/community>
- **July 18th SCAN meetings 7.30pm** Friends Meeting House, Eastcott Hill - **speaker to be arranged**
- **Dates for your diary, more details to follow:**
- **September 1st Forest Festival, The Lawns**
- **September 5th SCAN & TUC Meeting on Public Transport**
- **September 15th-30th Climate Friendly Community Fortnight**
- **September 22nd In Town Without My Car**
- **Email:** info@swindonclimate.org.uk
- **Web:** www.swindonclimate.org.uk
- **Tel: 07791 751877 or 01793 791114**

 Please consider the environment before printing this newsletter.